



FIRST°

# First Degree Global Asset Management

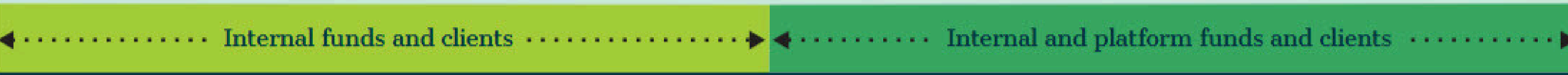
**Q4 2025**

We are an Independent Asset Manager, substantially-owned by the Principals of the firm. We commenced business in 2011 as one of the first independent asset managers in Singapore.

We operate one of Singapore's leading funds platforms with more than 30 active funds across a range of public and private asset classes.

Each member of our team is a highly experienced asset management professional, with decades of industry experience between us.

# Our History



**2011**

Commenced business as an Exempt Fund Manager

**2013**

Became a Registered Fund Management Company

**2016**

Awarded Capital Markets Services Licence for Fund Management

**2019**

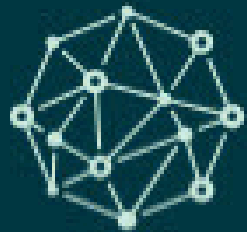
Launched first Platform Fund (Cayman Islands)

**2021**

Launched first Platform VCC (Singapore)

# Our Fund Platform

## Funds Managed (34)



**Digital Assets**  
Digital Assets (2)



**Property**  
• Asian property  
• UK property (2)



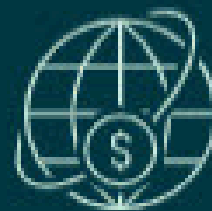
**Litigation Finance**  
Early-stage (2)



**Venture Capital**  
• Early-stage (8)  
• Asean focussed  
• Global



**Private Credit**  
• Asean consumer (4)  
• Family office lending (2)  
• UK mortgage lending  
• Australian property



**Multi-Assets**  
Global multi-asset (9)



## Assets Under Management (USD 'M)

Litigation Finance	10
Digital Assets	20
Property	100
Venture Capital	150
Multi-Asset	120
Private Credit	200
<b>Total</b>	<b>600</b>

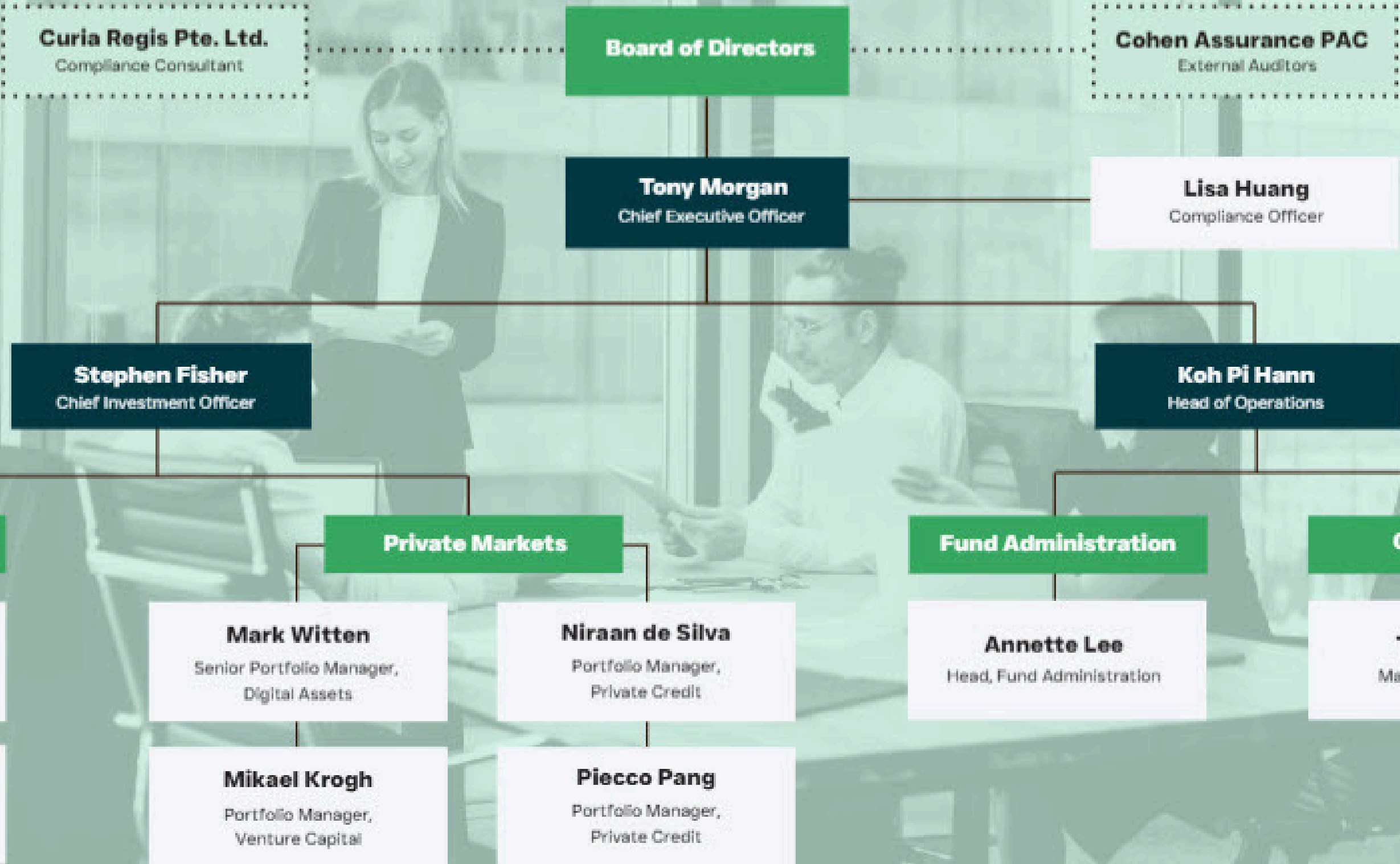
## Investors by Type



# Traditional Fund v Platform Fund

	Traditional Fund	Platform Fund
<b>Licensing</b>		Capital Markets Services Licence
<b>Resources</b>		Front, middle and back office
<b>Portfolio Managers</b>		Employed by the firm and appointed as Representatives
<b>Clients</b>		Funds and segregated mandates
<b>Licensing</b>	Manager obligation	Platform obligation
<b>Infrastructure</b>	Manager obligation	Platform obligation
<b>Regulatory Compliance</b>	Manager obligation	Platform obligation
<b>Team / Fund Build</b>	Manager originated	Sponsor originated
<b>Sponsor Economics</b>	Weak to strong connection to fund	Strong connection to fund
<b>Set-Up and Ongoing Costs</b>	Significant	Manageable even at seed-level AUM
<b>Establishment Time</b>	Significant	Immediate

# Our Team



# Backgrounds of Our Team Members

	<b>Stephen Fisher</b>	<b>Tony Morgan</b>	<b>Michael Bull</b>	<b>Mark Witten</b>	<b>Mikael Krogh</b>	<b>Niraan de Silva</b>	<b>Andrew Gillan</b>	<b>Piecco Pang</b>	<b>Pi Hann Koh</b>	<b>Annette Lee</b>	<b>Theresa Liu</b>	<b>Lisa Huang</b>	<b>Average</b>
<b>Role</b>	Chief Investment Officer	Chief Executive Officer	Senior Portfolio Manager	Senior Portfolio Manager	Portfolio Manager	Portfolio Manager	Portfolio Manager	Portfolio Manager	Head of Operations	Head of Fund Administration	Manager, Operations	Compliance Officer	
<b>Age</b>	<b>60</b>	<b>58</b>	<b>59</b>	<b>47</b>	<b>51</b>	<b>39</b>	<b>46</b>	<b>46</b>	<b>40</b>	<b>55</b>	<b>36</b>	<b>41</b>	<b>48</b>
<b>Years of Industry Experience</b>	<b>30</b>	<b>30</b>	<b>30</b>	<b>20</b>	<b>15</b>	<b>15</b>	<b>20</b>	<b>15</b>	<b>15</b>	<b>20</b>	<b>12</b>	<b>12</b>	<b>20</b>
<b>Prior Roles</b>	Head of Global Fixed Income Product - Asia Pacific, JPMorgan Asset Management (Singapore)	Chief Operating Officer - South Asia, JPMorgan Asset Management (Singapore)	Portfolio Manager - Multi Asset UCITS Funds, Optimus Capital (London)	Chief Investment Officer, Kaizen Asset Management (South Africa)	Managing Partner, Investigate VC (Singapore)	Head, Equity Capital Markets - South East Asia, Bank of America, Merrill Lynch (Singapore)	Head of Asia ex-Japan Equities, Janus Henderson Investors	Investment Associate, Merrill Lynch	Senior Account Manager, Apex Fund Services (Singapore)	Head, Fund Administration, JPMorgan Asset Management (Singapore)	Nutrimenta Singapore - Back Office Manager	Research Assistant, Monetary Authority of Singapore	



# First Degree Global Asset Management Pte. Ltd.

68 Amoy Street #03-00, Singapore 069887

Telephone: (65) 6815 1993

[www.firstdegree.asia](http://www.firstdegree.asia)